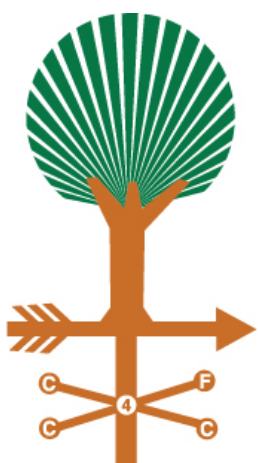




Annual Report 2015



Direction for the Future

Our Vision

Bridging philanthropy with causes that improve Crawford County’s quality of life.

Our Mission

As a catalyst, the foundation works to enhance the quality of life for all residents of Crawford County by:

- Offering a flexible vehicle that assures donors’ charitable interests and goals are realized.
- Providing support (financial, expert/technical assistance) in response to emerging community needs.
- Partnering with community organizations and collaboratives in support of promising innovations.

The Foundation is a permanent, tax-exempt, public charitable foundation established to improve the quality of life for the citizens of Bucyrus and the surrounding Crawford County area. Started with the help of *The Timken Foundation* in 1984, it is a vehicle by which individuals, groups, and corporations may channel contributions to the community. The CF4CC works diligently to fulfill our mission of improving life in the Crawford County community by:

- Awarding Grants
- Helping Donors
- Providing Leadership
- Managing our Investments
- Sponsoring Special Projects

Table of Contents

Board Members	1
Message from our President	2-3
Our Foundation	4
From the Beginning	5
2015 At A Glance	6
Distributions	7
Funds Held at the Foundation	8-9
Scholarship Recipients	10-12
Summary Financial Statement & Growth of Funds	13
How You Can Help	14
Donors	15-17

Board Members



Valerie Sanderson
Chairperson



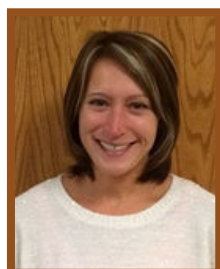
Brad Starkey
Vice-Chairperson



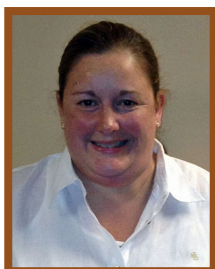
Michael Dostal
Secretary



Matt Orians
Treasurer



Jessica Berger
Trustee



Annie Carter
Trustee



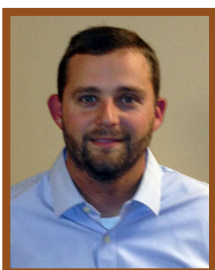
Robert Hiltbrand
Trustee



Janel Hord
Trustee



Pete Maynard
Trustee



Justin McMullen
Trustee



Rick Niese
Trustee



Dan Price
Trustee

Development Committee:
Justin McMullen, Chair
Jim Pry
Dave Dostal
Mark Schneider

Investment Committee:
Pete Maynard, Chair
Bob Vasil
Anne Cole
Tim Stenson
Matthew Pry
Pat Hord

Scholarship Committee:
George Guins
Nancy Heiby
Janet P. Pry
Jessica Berger

Additional Fund Representatives

Mollie Geissler (Brubaker Scholarship)
Pat Hargis (CCSHF Scholarship)
Carolyn Helbert (CCSHF Scholarship)
Deb Hofmann (Stover Scholarship)
Jill Kinn (Campbell Scholarship)
Allison Lonsway (Campbell Scholarship)
Donald Miller (Miller Scholarship)
Becky Napier (Campbell Scholarship)
Eric Stover (Stover Scholarship)

A Message from our President

“Do it anyway.” That’s the reoccurring theme behind Kent Keith’s Paradoxical Commandments. Kent reminds us that just because the world does not always value and appreciate virtues like helpfulness, determination, and honesty, we must still strive to be helpful, determined and honest.

In 2015, your community foundation and Crawford County citizens seized many opportunities to display our best and “do good anyway.” Probably the most remarkable achievement of the year was the opening of the Crawford Success Center in Bucyrus. A satellite of North Central State College, the Crawford Success Center offers our community the opportunity to take college courses and trainings without leaving home. Knowing that our county has a low rate of educational attainment, our community leaders identified this need and saw it through to fruition with the help of our Foundation, the Crawford Partnership, and many local businesses and individuals. According to U.S. Census data, those who hold only a high school diploma will obtain just 76% of the median income earned by those with associate degrees, and only 58% of the median income earned by those with a bachelor’s degree. Estimates show that if Crawford County were to increase our secondary education attainment by a mere 1%, that would mean an additional \$8,793,540.00 back into our community! The economic impact of increased education is clearly a win-win for all of us!

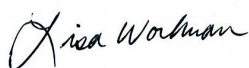


The Foundation continued to support our schools, students, non-profits and municipalities in 2015. Grants totaling \$310,000 were awarded to 30 agencies, helping them all continue their important work in our community. In addition, with our designated funds producing \$125,000 and \$10,000 being awarded in scholarships, the total in contributions to the community was \$445,000. The folks at Crawford 2020 Vision, in recognition of the Foundation’s outstanding personal development, commitment and contributions to the community, awarded the Foundation the 2015 Organization Leader of the Year. We humbly and gratefully accepted the award and strive to continue to “do good anyway.”

All of the successes and accomplishments that our Foundation gets to be a part of would not be possible without the support of our volunteers, our Board members and our donors. In 2015, our annual Match Day fundraiser, also known as #GivingTuesday, raised a record-breaking \$85,000! Added to the \$25,000 that our Board offered as a partial match, that meant \$110,000 were added to the funds held at the Foundation. To donate begins with “to do” after all, and our generous community proved that they wanted to “help people anyway.”

Ask any counselor or mental health professional and they’ll tell you that CHANGE is the number one cause of stress. But the only way we can begin to experience change as less stressful is to keep experiencing – indeed EMBRACING -- more change. We still have so many challenges in Crawford County to address: attracting and retaining businesses, the brain drain, educational attainment, poverty, substance abuse, food deserts, obesity, transportation, the list goes on. We can be overwhelmed. We can listen to the biggest men and women with the biggest ideas being shot down by the smallest men and women with the smallest minds. Or, we can “think big anyway.” We must embrace and encourage a future of positive change and be open to giving a little in order to gain a lot. Thank YOU for being an investor in Crawford County’s future!

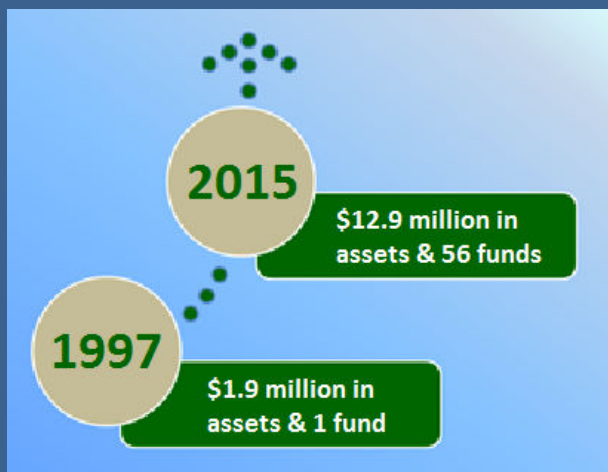
Regards,



Lisa Workman, CFRE, President

“It is more rewarding to watch money change the world than to watch it accumulate.”

~ Gloria Steinem



Our Foundation

The Community Foundation for Crawford County works diligently to fulfill our mission of improving life in the Crawford County community by:

- **Awarding grants** to charitable organizations, schools and municipalities within our designated geographical area.
- **Helping donors** decide the best and most effective way to meet their charitable wishes.
- **Providing leadership** in helping the community meet its ongoing and challenging needs.
- **Managing our investments** to ensure the continuation and growth of The Community Foundation for Crawford County's asset base. With the help of multiple professional investment advisors, the CF4CC is able to offer a safe method for both protecting and growing our assets.
- **Sponsoring special projects** where we work with community groups and organizations to help dreams become realities.

Helping donors do good work... investing in a forever future.

Our Foundation is a non-profit, community corporation created by and for the people of Crawford County. We are here to help our donors achieve their charitable goals via three special features:

Personalized Service. We make giving easy and effective, accepting a wide variety of gifts and providing donors a number of options. You can contribute via cash, stocks, or bequests. You may establish a fund in your name or in the name of a loved one. You may start a donor advised fund and make recommendations for its distribution. In most cases, your gift qualifies for maximum tax advantage under federal law.

Local Expertise. We have an in-depth understanding of the issues, opportunities and resources that shape our community. We monitor all areas of community need—including human services, education, the environment, healthcare, the arts and economic development. We can help you learn more about local organizations and programs that make a difference in areas you care about most.

Community Leadership. We invest in the long term and bring people and organizations together, convening diverse voices to address local issues and

Ten reasons people choose to give through our community foundation

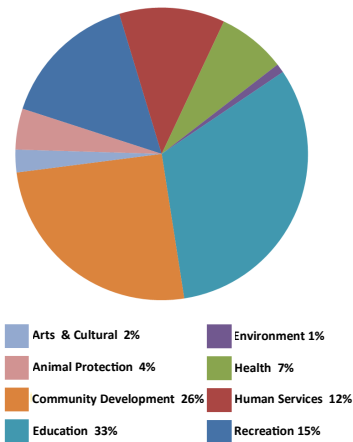
1. We are a local organization with deep roots in the community.
2. We have broad expertise regarding community issues and needs.
3. We provide highly personalized service tailored to each individual's charitable and financial interest.
4. Our funds help people invest in the causes they care about most.
5. We accept a wide variety of assets and can facilitate even the most complex forms of giving.
6. We partner with professional advisors to create highly effective approaches to charitable giving.
7. We offer maximum tax advantage for most gifts under Ohio and federal law.
8. We multiply the impact of gift dollars by pooling them with other gifts and grants.
9. We build endowment funds that benefit the community forever and help create personal legacies.
10. We are a community leader, coordinating collaborative resources to create positive change.

From the Beginning

Established in 1984, The Community Foundation for Crawford County is one of more than 700 community foundations in the United States today. We serve all of Crawford County, offering people a variety of ways to touch our community through philanthropic giving.

The CF4CC has granted more than \$4.15 million from our unrestricted fund since 1985.

Our Grant Awards Since 1985



65

Grants Distributed

4

New
Scholarship Funds
Established

3

New Board
Members

2015 At A Glance

616

Donors
Contributed

17

Scholarships
Awarded

34

Funds Participated in
Match Day

These facts
point to...

1

Impactful
Foundation

Distributions

In the year ending December 31, 2015, The Community Foundation for Crawford County awarded grants totaling over \$445,000 from our unrestricted funds to designees that benefit the Crawford County community.

2015 Grant Recipients

Alpha Recovery 12 Step Program

Bucyrus Outreach & Restoration Network (BORN)

Buckeye Robotics

Bucyrus and Crawford County D.A.R.E.

Bucyrus Area YMCA

Bucyrus Kiwanis Club

Bucyrus Little Theatre

Bucyrus Preservation Society

Bucyrus Public Library

Crawford County Agricultural Society

Crawford County Business/Education Advisory Council

Crawford County Community Concert Association

Crawford County Educational and Economic Development Partnership

Crawford County Veterans Hall of Fame, Inc.

Crawford-Marion ADAMH Board/Crawford County Health Partners

Crestline Assistance & Ministries Program (CAMP)

Crestline Child Care, Inc.

Fraternal Order of Police, Inc.-Bucyrus Lodge No. 68

Galion Youth Baseball Club

HomeCare Matters Home Health & Hospice

Humane Society Serving Crawford County

Junior Achievement of North Central Ohio

Lutheran Homes Society/Kettle Run

Marion-Crawford Prevention Programs (JTI)

North Central State College Foundation

Oakwood Cemetery Association

Odyssey Recovery Group

Philanthropy, Ohio

United Way of Crawford County

Wildlife Haven



Funds at The Community Foundation for Crawford County

The following funds have been created by individuals, corporations and non-profit organizations and help carry forth the mission of The Community Foundation for Crawford County.

Buckeye Central School Endowment Fund
Bucyrus Auditorium Endowment Fund
Bucyrus City School Endowment Fund
Bucyrus Historical Society Designated Fund
Bucyrus Preservation Society Designated Fund
Charles L. and Helen M. Wiles Designated Fund
Colonel Crawford School Endowment Fund
The Community Foundation For Crawford County Unrestricted Fund
Council On Aging Designated Fund
Crawford Antique Farm Machinery Association Designated Fund
Crawford County Agricultural Society Fund
Crawford County Community Concert Association Endowment Fund
Crawford County Sports Hall of Fame Building Fund
Crestline Historical Society Fund
Crestline Music Boosters Designated Fund
Crestline School Endowment Fund
Early Childhood Education Quality Improvement Non-Endowed Fund
Elizabeth C. Heckert Charitable Endowment Fund
Emergency Grant Fund
Friends of the Crawford Park District Fund
Friendship Bridge Designated Fund
Galion Community Education Foundation Brick and Mortar Fund
Galion Community Education Foundation Fund
Harold G. & Louise C. Pry Memorial Fund
Harvey School Designated Fund
Holy Trinity Athletic Fund
Humane Society Serving Crawford County Endowment Fund
John T. & Grace B. Bridges Fund
Little League Designated Fund
Loren's Cancer Care Designated Fund

Funds continued

Marian E. and Norman H. Maynard Bucyrus Public Library Fund
Murals Endowment Fund
New Washington Fund
OMIG Crawford Unlimited Leadership (CULEAD) Designated Fund
Playscape Designated Fund
Robert Clark Neff Fountain Endowment Fund
United Way Designated Fund
Unrestricted Bucyrus Auditorium Fund
Unrestricted Crawford County Community Concert Association Fund
The Weekes Family Memorial Fund
Wynford School Endowment Fund
YMCA Bucyrus Designated Fund

Scholarship Funds

Crawford County Sports Hall of Fame Scholarship Fund
*Crawford Forward Scholarship Fund
*Daryl E. Stucky Memorial Scholarship Fund
Dustin T. Stover Scholarship Fund
Holmes Liberty Alumni Scholarship Fund
James E. Huggins, Sr. and Margaret M. Huggins Agricultural Scholarship Fund
Jeanne A. Miller Scholarship Fund
John W. Brubaker Scholarship Fund
Kevin A. Binau Scholarship Fund
*Larry Schiefer Memorial Scholarship Fund
Pry Scholarship Fund
*Rollie and Esther Wilson Scholarship Fund
Richard E. Stearns Scholarship Fund
Samuel Neff Fellowship for International Study Scholarship Fund
Susan Campbell Memorial Scholarship Fund

Scholarship Recipients

The Community Foundation for Crawford County is proud to introduce the 2015 scholarship recipients for the following scholarships:

Crawford County Sports Hall of Fame Scholarship Fund



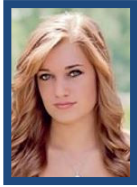
Cole Murtiff
Bucyrus HS



Austin Patrick
Crestline HS



Ellie Richmond
Wynford HS



Cassie Sager
Colonel Crawford HS

Dustin T. Stover Scholarship Fund



Karlee Koge
Colonel Crawford HS



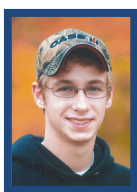
Rachel Ehresman
Wynford HS

Holmes Liberty Alumni Scholarship Fund

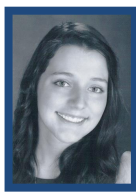


Hunter Miller
Wynford HS

James E. Huggins, Sr. and Margaret M. Huggins Agricultural Scholarship Fund



Wesley Wingert
Colonel Crawford HS



Taryn Ramsey
Bucyrus HS

Jeanne A. Miller Scholarship Fund



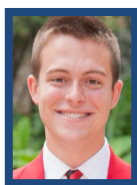
Brooke Miller
Wynford HS

John W. Brubaker Scholarship Fund



Cole Murtiff
Bucyrus HS

Kevin A. Binau Scholarship Fund



Blake Miller
Crestline HS

Samuel Neff Fellowship for International Study Scholarship Fund



Haley McCarthy
Miami University
2013 Buckeye Central
HS Graduate



Kristin Schiefer
Bluffton University
2012 Wynford
HS Graduate

Susan Campbell Memorial Scholarship Fund



Megan Lyons
Colonel Crawford HS



Jordan Studer
Colonel Crawford HS



*Congratulations to all our
scholarship winners and
good luck with all your
academic endeavors.*

The Community Foundation for Crawford County

Summary Financial Statement December 31, 2015

	<u>2015</u>
ASSETS	
Cash	\$ 123,614
Investments	13,058,066
Deferred grants and pledges	265,000
Property and equipment	<u>330,391</u>
TOTAL ASSETS	13,777,071
 LIABILITIES	
Current liabilities	15,000
Funds held in trust	<u>781,440</u>
TOTAL LIABILITIES	796,440
 NET ASSETS	 <u>\$ 12,980,631</u>
 NET ASSETS & LIABILITIES	 <u>\$ 13,777,071</u>
 REVENUES	
Contributions and gifts	\$ 296,524
Net investment income	(559,837)
Miscellaneous revenues	<u>15,640</u>
TOTAL REVENUES	(247,673)
 EXPENSES	
GRANTS & SCHOLARSHIPS	606,909
OPERATING EXPENSES	
Salaries & benefits	91,741
Other operating expenses	<u>60,107</u>
TOTAL OPERATING EXPENSES	<u>151,847</u>
TOTAL EXPENSES	<u>758,757</u>
 CHANGE IN NET ASSETS	 \$ (1,006,430)
 NET ASSETS, BEGINNING OF YEAR	 <u>\$ 13,987,061</u>
 NET ASSETS, END OF YEAR	 <u>\$ 12,980,631</u>

Growth of Funds

<u>Fiscal Year</u>	<u>Funds Managed</u>
2000	16
2001	21
2002	24
2003	28
2004	28
2005	30
2006	32
2007	36
2008	36
2009	35
2010	40
2011	42
2012	44
2013	46
2014	52
2015	56

HOW YOU CAN HELP:

Pay it Forward ...

What motivates you? People report that giving makes them feel good. It's just a matter of finding your best personal fit – for your charitable priorities, financial goals, and personal preferences.

The Community Foundation for Crawford County offers donors a flexible, easy way to aid a broad range of worthy organizations while enjoying the most favorable tax treatment the law allows.

Contributions of any size are welcome to existing funds, at any time.

In addition to the existing funds listed in this report, it is simple to establish a new fund or scholarship within The Community Foundation for Crawford County by creating an endowment for a favorite nonprofit. Endowment gifts are invested over time so that your gift AND all its future earnings are a permanent source of good work for the future.

Another way to contribute is through planned giving. Such gifts may comprise including the Foundation in your will, naming the Foundation as a beneficiary in a life insurance policy, or charitable trusts. When contemplating such gifts to the Foundation, consult with your financial, tax or legal advisor.

“The good you do today may be forgotten tomorrow.

Do good anyway.”

– Kent Keith
from *The Paradoxical Commandments*



Donors

Thanks to our donors,
The CF4CC is making
charitable dreams come
true, every day in
Crawford County and
beyond.



We would not exist without our generous donors. These individuals, organizations, and businesses are those who provide the monies for the funds which are the basis for the integrated work of the Foundation.

A

Jeannene Ackerman
Paul and Brenda Alt
American Shoe LLC
Anthony-Lee Screen Printing, Inc.
Guillermo and Heidi Arbona
Charles and Pamela Armbruster
Jane Armbruster
Philip Armbruster
David and Patty Auck
James and Mardale Aurand

B

R. B and Linda Barrett
J. Alan and Mary Ann Basinger
Paul Bechtel
Donald and Marian Beck
J. Sebastian and Jessica Berger
John Berger
Donald Binau
William and Joanne Breyley
Mack Bridges
Bucyrus Moose Lodge No. 669
BUNCO 2nd Thursday
BUNCO 4th Thursday
Donald and Marilyn Burkholder
Janice Butler

C

C and D Jury Farms and Trucking
Carol Carpenter
Joel and Bonnie Castanien
Colonel Crawford High School Class
of 1965 Reunion
Chevron Matching Employee Funds
of YourCause, LLC
Charles and Lisa Clark
David Cochran
Gary and Helen Cole
Colonel Crawford Lions Club
Colonel Crawford Local Schools

Julia Corcoran
Gary and Helen Cole
Colonel Crawford Lions Club
Colonel Crawford Local Schools
Julia Corcoran
Kevin and Elizabeth Cotsmire
Steve and Michelle Crall
Crawford County Agricultural
Society
Crawford County Community
Concert Association
Crawford County Education and
Economic Development
Partnership, Inc.
Crawford County Sports Hall of
Fame
Crestline Chiropractic Clinic
Crestline Railroad Community Corp.

D

Peggy Degray
Gerry and Liz Dolan
Dave and Deb Dostal
Mike and Kiley Dostal
Dzugan Real Estate
Lynlee Dzugan

E

Nicholas and Peggy Earl
Kris and Tara Eckert
Emerson and Dorothy Eckstein
Ehrhart's Drive Thru
Brent Ekin
Harold Eppley

F

Findlay Implement Co.
Dave Fisher
Bill and Donna Fisher
William and Susan Follansbee
Gary and Holly Frankhouse

Donors continued

G

Grant and Margaret Garverick
Harold and Nola Garverick
Lowell and Dolores Garverick
Robert and Norma Gebhardt
Steven and Patricia Gebhardt
Larry and Mary Geissler
Robert and Judith Grochowalski
David and Missi Grove
Ralph and Pam Grubel

H

Veronica Halberg
David and Karen Halsey
Jayson and Tammy Harer
Marjorie Harter
Shirley Hartschuh
Scott and Mary Lou Hastings
Steven and Carolyn Helbert
Thomas and Marcia Heminger
David Hendricks
Ricky and Carleen Higgins
Bob Hiltbrand
Julia Hoffman
Mike and Beth Hoffman
Amy Holtshouse Brennen
Tom and Pam Holtshouse
Duane and Inez Hord
Pat and Janel Hord
Douglas and Susan Horsley
E. Richard and Carol Hottenroth
David and Susan Howe
Marshall Hughes

I

Insurance Center of Bucyrus

J

J & F Construction and Development, Inc.
J & F Real Estate Investments, LLC
Paulette James

K

Benjamin and Caroline Karam
Allisun Kelbley
Ronald and Susan Keller
Ken Bishop Insurance Service, Inc.
John and Joyce Kennedy
Michael and Kathleen Kennedy
Susan Kent
Key Bank National Association
Mary Alice Kirkpatrick
Janet Kohls
Delbert and Marilyn Koons
Jack and Barbara Koschnick

Martha Kozik

L

Londell and Margaret Leapley
Doug Leuthold
Leyda 2014 Revocable Family Trust
LF Farms
Lilybug Enterprises, LLC
Linden Monuments
Alberta Lohr
Lorain Music and Vending Company
Loren's Cancer Care Fund Benefit
(Estelle Runal's Senior Project)
Edward and Cheryl Luidhardt

M

Janet Maddy
Martini's and The Clubhouse
The Maynard Family Foundation
Denise Maynard
Nancy Maynard
Pete and Susan Maynard
Patricia McDonald
Brad and Krista McKibben
Jason and Erin McMullen
Justin and Sherri McMullen
Glen and Nancy McMurray
Libby McPeck
James and Sue Mee
Gregory and Krista Meyer
Mike Romanoff Enterprises
Donald Miller
Roger and Kindar Miller
Tom and Nadine Miller
Bill and Mary Lee Minor
Steve and Dona Mohr
Mark and Patricia Murphy
Patricia Myers

N

Helen Picking Neff
James and Patricia Neff
Network for Good
Rick and Shelley Niese

O

Charles and Mary Jo Oberlander
Jan O'Heron
Ohio Mutual Insurance Group
Matthew Orians
Mark and Judy Osborne

P

R. Scott and Janet Painter
Parr and Parr

Donors continued

Parr Insurance Agency, Inc.
Hilary Patriok
Roger and Martha Peckinpaugh
James and Alita Phillips
Dan and Barb Price
James and Janet Pry

R

Rank Family Trust
Col. James Rankin
Sylvia Rankin
Rego Manufacturing Co., Inc
Jean A. Reinhard Revocable Trust
Richland Real Estate
Development, LLC
Sean and Kendra Ritzhaupt
Tami Robinson
Rotary Club of Bucyrus
Ruth and Sam Neff Fund of the
Fidelity Charitable Gift Fund

S

Ron and Carolyn Sand
Jeffrey and Valerie Sanderson
Russ and Judi Saurers
Schiefer Insurance Services, LLC
Leonard Schiefer
Pauline Schiefer
Greg and Verna Schifer
Cheryl Schmidt
Mark Schneider
Gladys G. Schrag Trust
William and Jennifer Scott
Joe and Susan Shadeed
Roberta Sigler
Anthony Smith
Gene Smith
Laura Smith
Eric and Jayme Sparks
Spencers Mowing and Landscape
Jim and Valerie Spreng
Brad and Karen Starkey
Robert and Nancy Stauffer
Tim and Kathy Stenson
J. William and Marilyn Stepro
Jon Stinehour

Michael and Linda Stitzlein
Geoffrey Stoll
Harold and Marylyn Strang
Rodney and Sue Streib
R. Todd and Rebecca Stickland
Stuckey Farms
Michael and Susan Stuckman

T

Team Hugs From Heaven
Teynor Builders
Thomas Teynor
The Timken Company Charitable
and Edu Fund Matching Gift
Program
Emmett and Jeannine Tupps

V

Barbara Vanorsdall
Nicholas and Peg Vasil
Robert Vasil
Joyce Vaughn
VFW of Foreign Wars of Ohio
Charities Post 2920

W

Wechter Farms LLC
Susan Weeks
Timothy Weiskopf
Donald Wenner
Haven and Marianne Wensinger
Ed and Sandy Wertz
William G. Martin Realty, Inc.
Donald E. Wilson Family Trust
Dave and Angela Wise
Dale and Joan Wolfe
Bruce and Lisa Workman
Gerald and Mary Wurm
Wurm's Woodworking Co.
Wynford FFA Alumni

Y

David and Brenda Young

Z

Zara Construction, Inc.



Like branches on a tree, we all grow in different directions...yet our roots remain as one. Please help Crawford County, this place we call home, by making a gift that lasts forever.



The **Community Foundation** For **Crawford County**
254 East Mansfield Street
Bucyrus, OH 44820
Telephone: (419) 562-3958
Fax: (419) 617-7308
Email: info@cfcrawford.org
www.cfcrawford.org

