

The  
Community  
Foundation  
For Crawford  
County



HOME  
is Why



2017 Annual Report & 2019 Calendar

## Our Vision

Bridging philanthropy with causes that improve Crawford County's quality of life.

## 2017 Board Members



**Brad Starkey**  
Chairperson



**Justin McMullen**  
Vice-Chairperson



**Janel Hord**  
Secretary



**Matt Orians**  
Treasurer



**Jessica Berger**  
Trustee



**Annie Carter**  
Trustee



**Tim Hicks**  
Trustee



**Pete Maynard**  
Trustee



**Brad Murtiff**  
Trustee



**Dan Price**  
Trustee



**Dawn Ratliff**  
Trustee



**Joe Shadeed**  
Trustee

## Our Mission

To support collaborative, impactful and philanthropic leadership that provides quality and lasting investments in our community, now and for generations to come.

## 2017 Committee Members

### DEVELOPMENT COMMITTEE

Justin McMullen, Chair  
Dave Dostal  
Jim Pry  
Mark Schneider

### INVESTMENT COMMITTEE

Pete Maynard, Chair  
Anne Cole  
Steve Crall  
Pat Hord  
Matthew Pry  
Tim Stenson  
Bob Vasil

### SCHOLARSHIP COMMITTEE

Jessica Berger  
Nancy Heiby  
Ken Jarvis  
Lisa Workman

#### *Additional Fund Representatives*

Deb Hofmann (Dustin T. Stover  
Scholarship)

Eric Stover (Dustin T. Stover Scholarship)  
Donald Miller (Jeanne A. Miller Scholarship)  
Jody Miller (Jeanne A. Miller Scholarship)  
Mollie Geissler (John W. Brubaker, Jr.  
Scholarship)  
Emily Norris (Nancy Angene Johnson  
Scholarship)

### COME HOME SCHOLARSHIP COMMITTEE

Brad Murtiff  
Mike Dostal  
Erin Stine  
Jenny Vermillion

### OUTSIDE SCHOLARSHIP COMMITTEES:

*Crawford County Sports Hall of  
Fame Scholarship Committee:*  
Pat Hargis & Carolyn Helbert

*Crawford Forward Scholarship Committee  
(Crawford County Young Professionals):*  
Emily Burger & Matthew Scheffler

*Kenneth Cummins Scholarship, Robert  
Schwaderer Scholarship, and Tyler Niese  
Memorial Scholarship Committee (Buckeye  
Central Scholarship Committee):*  
Betty Majoy, Haley Carrick, Mike Martin,  
Marcia Stout, Zac Kaple, Chelsea Laughbaum

*Kiwanis Kahle-Wenner Scholarship Committee  
(Bucyrus Kiwanis Club):*  
Duane Watts, Ken Cameron, Don Wilson,  
Annie Buckles, Rob Ratliff

*Merle and Peg Hutson Scholarship Committee:*  
Gary Almanson, Libbie Anatra, Matt Bickert,  
Tammy Creed, John DiPetro, Carolyn Helbert, Barb  
Ruhe, Bob Runyon, John Supon

*Pry Scholarship Committee (Crawford  
County Young Professionals):*  
Hannah Jacobs & Andrea Pressler

*Rollie and Esther Wilson Scholarship Committee:*  
David Sheldon, Colonel Crawford Athletic Director  
Jake Bruner, Colonel Crawford Principal  
Ryan Teglovic, Colonel Crawford Guidance Counselor  
Chuck Huggins, Colonel Crawford Girls' Softball Coach  
Todd Martin, Colonel Crawford Superintendent

*Samuel Neff Fellowship for International  
Study Scholarship Committee:*  
Mike Hoffman, Jessica Berger, Lisa Workman

*Susan Campbell Memorial Scholarship  
Committee (Colonel Crawford Lions Club):*  
Jill Kinn, Becky Napier, Ruthann Noblet

# A MESSAGE FROM OUR PRESIDENT



"It's a new world!" We often utter that statement when we are reflecting on how times have changed. Change is an inevitable fact of life that occurs naturally; change is more challenging and stressful when we actively pursue and promote it for the sake of growth and improvement. After all, it's always easier to just sit back and keep doing the same thing, aka "that's how we've always done it."

At your community foundation, nothing demonstrated the need for change in 2017 better than our scholarship process. Unfortunately, only about half of U.S. students (54.8%) leave college with a diploma, and about 30% of those drop out after their first year. Education is not cheap, and Ohio ranks 45th out of 50 states in college affordability. Certainly the pressures of mounting debt burdens make students more likely to drop out, and the fear of acquiring the debt makes others fearful to

enroll in the first place. Still, a recent study from Georgetown University found that, on average, college graduates earn \$1 million more over their lifetime. In spite of the cost, education is definitely worth pursuing!

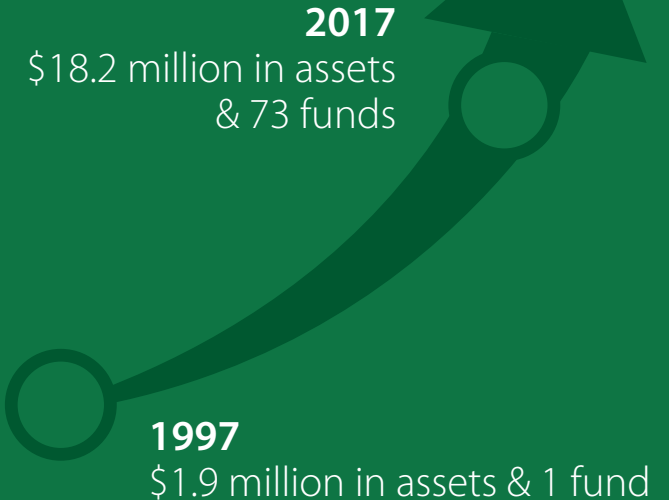
Now enter the new world of scholarships! Once scholarships were only attainable for high school graduating seniors with high scholastic achievement. These days, we offer many scholarships to our citizens who graduated high school years ago and wish to go back to school, to students already in college, and to college graduates willing to move back home to live and work and get their college debt paid down. We call the latter our Come Home Scholarship Program, and we became the first foundation in Ohio (and 4th in the nation) to offer this incentive. Many of these scholarships are also renewable as we seek to get more folks through school rather than just enrolled in their first year. These changes were made possible because the local donors who started these scholarship funds were willing to listen and try something new, to CHANGE. In 2017, we awarded \$66,000 in scholarships from 27 scholarship funds, up from \$23,000 the prior year.

Scholarships were not all that changed in 2017. Seeing the need for more sustainable office hours and staffing, we made Amy Vaughn our Program and Office Manager and are now staffed with two full-time employees. Our remaining funds grew from 42 to 45 and generated \$225,748 for the agencies and schools that hold them. Our Board members weighed in on our competitive grant program and awarded \$316,800 back to our community. They also increased the amount designated for the 2017 #Giving2sday fundraising event, and a new record total of \$155,500 was thus generated for our community. In all, there were seven new funds and over \$2.4 million in revenue generated in 2017. The Foundation had 73 total funds and was worth \$18 million in total assets as we entered 2018 – an amazing feat for a county with only 42,000 residents!

Speaking of #Giving2sday, this international day of philanthropy was co-founded by Henry Timms, who also co-authored the book, "New Power." According to this book, "People actually begin changing behavior when an idea gets validated by their community, rarely when it has not." For our community to continue to improve, we must be willing to come together as Crawford Countians. We must be willing to reduce our duplication of services and realize we are stronger as one when we combine and collaborate. We must keep our WHY and increase our curiosity to forge new paths of positive change. Let the change begin with you. HOME is WHY!

Regards,  
**Lisa Workman**  
CFRE, President

## GROWTH OF ASSETS



“People actually begin changing behavior when an idea gets validated by their community, rarely when it has not.”

**Jeremy Heimans and Henry Timms**  
from New Power

HOME

is Why



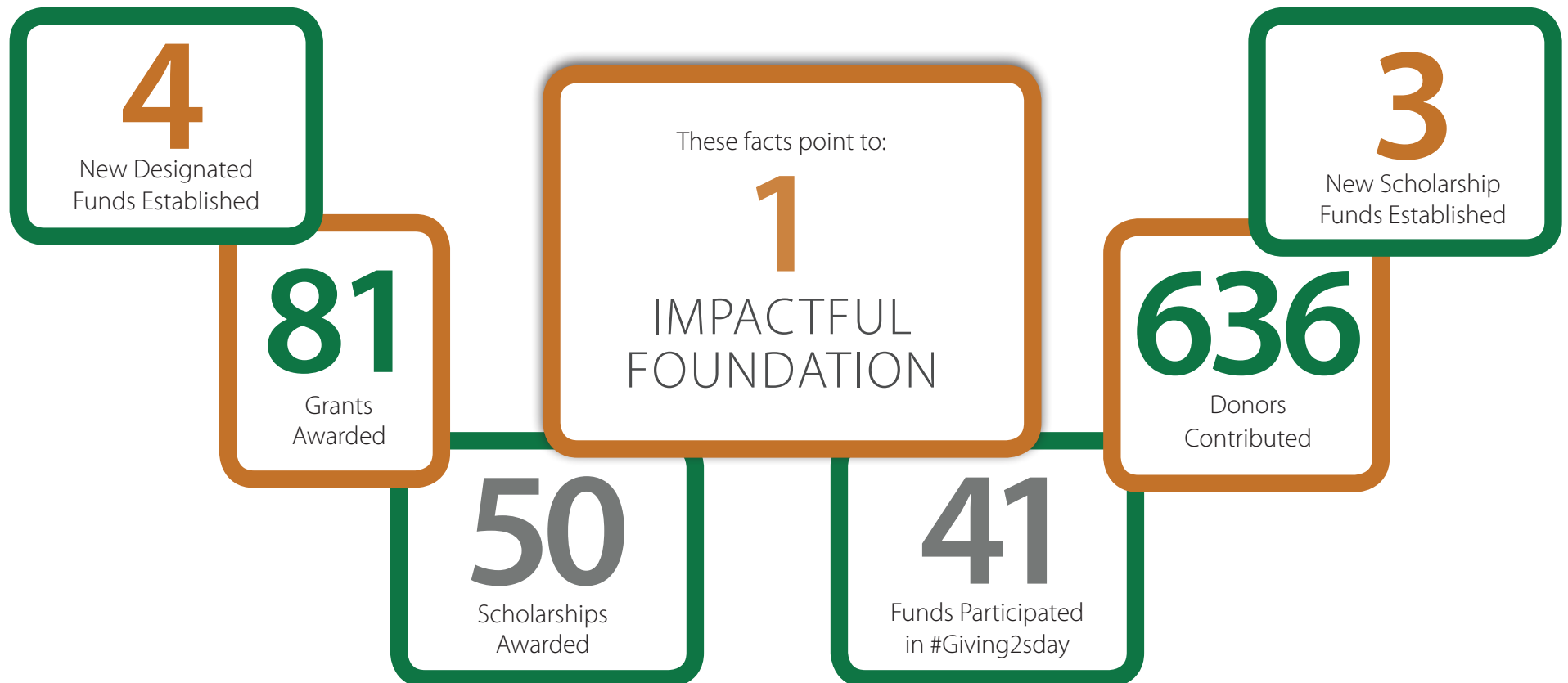
# THE COMMUNITY FOUNDATION...

is a catalyzing force that creates a better future for all by addressing the community's most critical or persistent challenges, inclusively uniting people, institutions and resources, and producing significant, widely shared and lasting results.

-CFLeads, Aspen Institution Community Strategies Group and The Council on Foundations from Framework for Community Leadership by a Community Foundation

---

## 2017 AT A GLANCE





# FROM THE BEGINNING...

The Timken Foundation helped establish The Community Foundation for Crawford County in 1984. It is one of more than 780 community foundations in the United States today. We serve all of Crawford County, offering a variety of ways to touch our community through philanthropy. We have granted more than \$4.77 million from our unrestricted fund since 1985.

## 2017 SUMMARY FINANCIAL STATEMENT

### ASSETS

Cash	\$340,530
Investments	\$18,627,141
Deferred grants and pledges	\$135,000
Property and Equipment	\$306,173
<b>TOTAL ASSETS</b>	<b>\$19,408,843</b>

### LIABILITIES

Current liabilities	\$10,000
Funds held in trust	\$1,113,735
<b>TOTAL LIABILITIES</b>	<b>\$1,123,735</b>

<b>NET ASSETS</b>	<b>\$18,285,108</b>
<b>NET ASSETS &amp; LIABILITIES</b>	<b>\$19,408,843</b>

### REVENUES

Contributions and gifts	\$2,032,155
Net investment income	\$2,665,235
Miscellaneous revenues	\$4,629
<b>TOTAL REVENUES</b>	<b>\$4,702,019</b>

### EXPENSES

<b>GRANTS &amp; SCHOLARSHIPS</b>	<b>\$586,719</b>
<b>OPERATING EXPENSES</b>	
Salaries & Benefits	\$98,507
Other Operating Expenses	\$71,121
<b>TOTAL OPERATING EXPENSES</b>	<b>\$169,628</b>
<b>TOTAL EXPENSES</b>	<b>\$756,347</b>

<b>CHANGE IN NET ASSETS</b>	<b>\$3,945,671</b>
<b>NET ASSETS, BEGINNING OF YEAR</b>	<b>\$14,339,436</b>
<b>NET ASSETS, END OF YEAR</b>	<b>\$18,285,108</b>

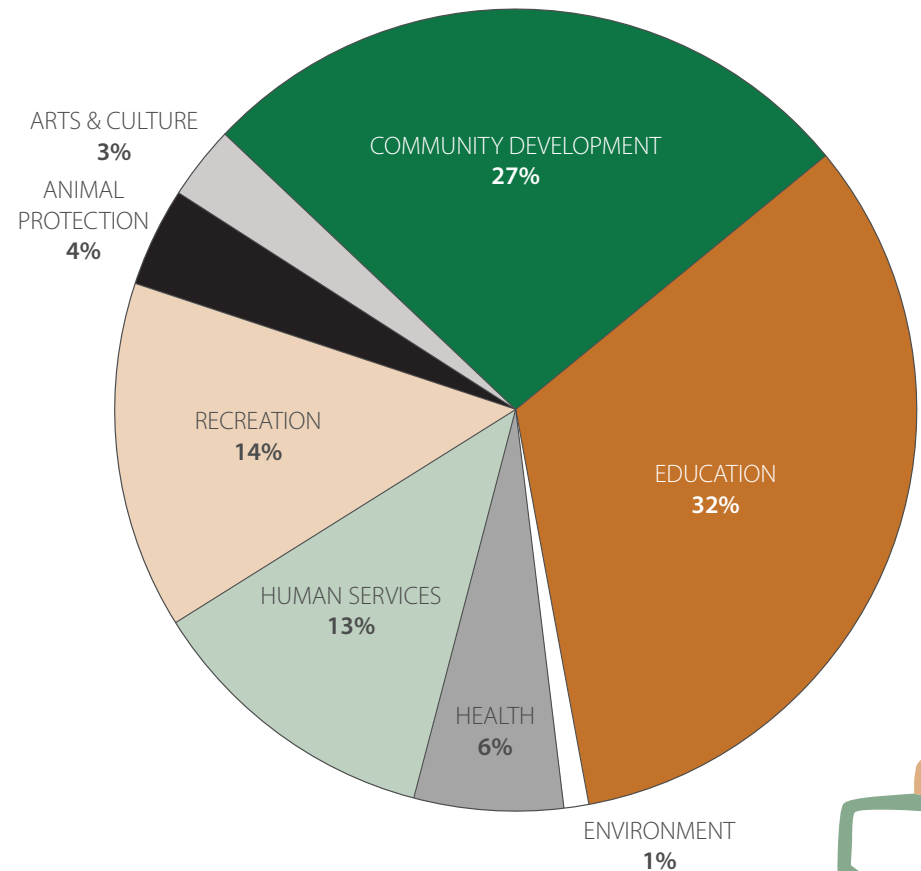
## GROWTH OF FUNDS

### FISCAL YEAR

### FUNDS MANAGED

2017	73
2016	66
2015	56
2014	52
2013	46
2012	44
2011	42
2010	40
2009	35
2008	36
2007	36
2006	32
2005	30
2004	28
2003	28
2002	24
2001	21
2000	16

## GRANTS AWARDED FROM OUR UNRESTRICTED FUND SINCE 1985



HOME

is Why



Notable Crawford Countain - Ida May Pope was born in Crestline and graduated from Bucyrus High School in 1879. In 1886 she graduated from Oberlin College, and after a few years of teaching in Bucyrus and Columbus she left for Hawaii to teach at a boarding school for girls. Later, she became the first principal of The Kamehameha School for Girls and was known for dedicating her life to the young women of Hawaii at a time when the islands were undergoing political and social upheaval at the hands of the U.S. Miss Pope's life is captured in the book, "Light in the Queen's Garden" by Dr. Sandra Bonura.

DECEMBER 2018

S	M	T	W	T	F	S
						1
2	3	4	5	6	7	8
9	10	11	12	13	14	15
16	17	18	19	20	21	22
23	24	25	26	27	28	29
30	31					

# JANUARY

## 2019

FEBRUARY

S	M	T	W	T	F	S
						1 2
3	4	5	6	7	8	9
10	11	12	13	14	15	16
17	18	19	20	21	22	23
24	25	26	27	28		

Sunday	Monday	Tuesday	Wednesday	Thursday	Friday	Saturday
		1 New Year's Day	2	3	4	5
6	7	8	9	10	11	12
13	14	15	16	17	18	19
20	21 Martin Luther King Day	22	23	24	25	26
27	28	29	30	31		





A non-migratory bird, this black-capped chickadee demonstrates the true meaning of a “snow bird” as he is spending his winter here with us at Lowe-Volk Park. His diet includes insects in the summer, and he is attracted to feeders with suet, sunflower and peanuts.

Photo by: Bill Fisher



JANUARY						
S	M	T	W	T	F	S
		1	2	3	4	5
6	7	8	9	10	11	12
13	14	15	16	17	18	19
20	21	22	23	24	25	26
27	28	29	30	31		

# FEBRUARY

## 2019

MARCH						
S	M	T	W	T	F	S
					1	2
3	4	5	6	7	8	9
10	11	12	13	14	15	16
17	18	19	20	21	22	23
24	25	26	27	28	29	30
31						

Sunday	Monday	Tuesday	Wednesday	Thursday	Friday	Saturday
					1	2
						Groundhog Day
3	4	5	6	7	8	9
10	11	12	13	14	15	16
				Valentine's Day		
17	18	19	20	21	22	23
	Presidents' Day					
24	25	26	27	28		



Down on the Farm - On September 19, 1987, Mr. and Mrs. Bob Evans acted as Grand Marshals for the Crestline Harvest Festival parade. Among other accomplishments, Evans is the founder of Bob Evans Farm Sausage and Restaurants. He is a former resident of Crestline and attended school there for a time as well.

## FEBRUARY

S	M	T	W	T	F	S
					1	2
3	4	5	6	7	8	9
10	11	12	13	14	15	16
17	18	19	20	21	22	23
24	25	26	27	28		

# MARCH

## 2019

## APRIL

S	M	T	W	T	F	S
	1	2	3	4	5	6
7	8	9	10	11	12	13
14	15	16	17	18	19	20
21	22	23	24	25	26	27
28	29	30				

Sunday

Monday

Tuesday

Wednesday

Thursday

Friday

Saturday

					1	2
3	4	5	6	7	8	9
			Ash Wednesday			
10	11	12	13	14	15	16
Daylight Saving Time begins						
17	18	19	20	21	22	23
St. Patrick's Day			Spring begins			
24	25	26	27	28	29	30
31						





CHICK IT OUT! New Washington is known as the “Birthplace of the Baby Chick Industry” thanks to the Uhl Hatchery, the first commercial hatchery in the United States. The Uhl Hatchery also initiated the first shipment of baby chicks by rail in 1900.

Photo: Dutchman Festival  
Facebook Page

MARCH

S	M	T	W	T	F	S
					1	2
3	4	5	6	7	8	9
10	11	12	13	14	15	16
17	18	19	20	21	22	23
24	25	26	27	28	29	30
31						

# APRIL

## 2019

MAY

S	M	T	W	T	F	S
			1	2	3	4
5	6	7	8	9	10	11
12	13	14	15	16	17	18
19	20	21	22	23	24	25
26	27	28	29	30	31	

Sunday

Monday

Tuesday

Wednesday

Thursday

Friday

Saturday

1

2

3

4

5

6

7

8

9

10

11

12

13

National Volunteer Week  
April 7-13

14

15

16

17

18

19

20

Good Friday

21

22

23

24

25

26

27

Easter

28

29

30





**VOLACK JOE SALTES**  
*He was a leader of Chicago's West Side—until he threatened "them damn Sicilians."*



**GEORGE DEAS MORAN**  
*He was an enforcer of Capone—until his gang fell in the Valentine's Day massacre.*



**JOHN J. EGAN**  
*"I'm getting out," said this boss of Chicago to Capone after trials against him failed.*



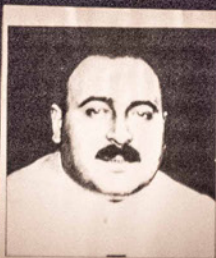
**DION O'BANION**  
*Pickpocket and safe-cracker, he made the big time with Turrio, soon known as the North Side.*



**AL CAPONE**  
*His comrades went off on their various assignments crying, "All for Al, and Al for All!"*



**LITTLE JIMMY WEISS**  
*"I'll kill you for this," said pretty Little Jimmy to the photographer who took this picture.*



**BIG JIM COLANINNO**  
*A long-time ruler of brothels and opium dens, he was Chicago's first Prohibition gang chief.*



**MACHINE GUN JACK MCGURN**  
*Chief of Capone's gunners, he masterminded a massacre on Valentine's Day in 1929.*



**WILLIAM KLONDIKE O'DONNELL**  
*He and his brother Myles, "querrillas of the bootleg war," dared invade Capone's Cicero.*

“Some call it bootlegging. Some call it racketeering. I call it a business.”  
 - Al Capone

The Speakeasy in Bucyrus was the rumored underground hangout where famous mob boss Al Capone and other gangsters would spend time when traveling between Chicago and New York. Located beneath the current Crazy Fox Saloon, the speakeasy's access to a large tunnel system under the city would have provided for a quick getaway.

Photo By: Adam Knapp



APRIL						
S	M	T	W	T	F	S
	1	2	3	4	5	6
7	8	9	10	11	12	13
14	15	16	17	18	19	20
21	22	23	24	25	26	27
28	29	30				

# MAY

## 2019

JUNE						
S	M	T	W	T	F	S
						1
2	3	4	5	6	7	8
9	10	11	12	13	14	15
16	17	18	19	20	21	22
23	24	25	26	27	28	29
30						

Sunday	Monday	Tuesday	Wednesday	Thursday	Friday	Saturday
			1	2	3	4
5	6	7	8	9	10	11
Cinco de Mayo						
12	13	14	15	16	17	18
Mother's Day						
19	20	21	22	23	24	25
26	27	28	29	30	31	
	Memorial Day					



Hepatica at Heckert Nature Preserve - Situated in the Olentangy River drainage, it is thought that a trading post was located near the park in the 1700's, and that the area was an important portage for Native Americans to and from the Sandusky River.

Photo By: Bill Fisher

MAY						
S	M	T	W	T	F	S
			1	2	3	4
5	6	7	8	9	10	11
12	13	14	15	16	17	18
19	20	21	22	23	24	25
26	27	28	29	30	31	

# JUNE

## 2019

JULY						
S	M	T	W	T	F	S
	1	2	3	4	5	6
7	8	9	10	11	12	13
14	15	16	17	18	19	20
21	22	23	24	25	26	27
28	29	30	31			

Sunday	Monday	Tuesday	Wednesday	Thursday	Friday	Saturday
						1
2	3	4	5	6	7	8
9	10	11	12	13	14	15
					Flag Day	
16	17	18	19	20	21	22
Father's Day					Summer begins	
23	24	25	26	27	28	29
30						





U.S. Navy #NH 103909



Photo By: Lisa Workman

Crawford County Hero - Harry L. Martin graduated from Bucyrus High School and Michigan State College before becoming a first lieutenant in the Marine Corp during WWII. His leadership and bravery during the Battle of Iwo Jima ultimately cost him his life, and sadly his death occurred on his parents' 36th wedding anniversary. He posthumously received the Congressional Medal of Honor in 1945. Lt. Martin could trace lineage to Col. William Crawford and to Pocahontas. His commemorative tombstone can be found at Oakwood Cemetery in Bucyrus.

JUNE						
S	M	T	W	T	F	S
						1
2	3	4	5	6	7	8
9	10	11	12	13	14	15
16	17	18	19	20	21	22
23	24	25	26	27	28	29
30						

# JULY

## 2019

AUGUST						
S	M	T	W	T	F	S
				1	2	3
4	5	6	7	8	9	10
11	12	13	14	15	16	17
18	19	20	21	22	23	24
25	26	27	28	29	30	31

Sunday	Monday	Tuesday	Wednesday	Thursday	Friday	Saturday
	1	2	3	4 Independence Day	5	6
7	8	9	10	11	12	13
14	15	16	17	18	19	20
21	22	23	24	25	26	27
28	29	30	31			





Dog Days of Summer - This Timken employee withstands heat from furnaces as he helps the company produce tapered roller bearings. The Timken Foundation donated the seed money to start The Community Foundation for Crawford County in 1984. Manufacturing is the leading industry in Crawford County, supplying over 4,000 jobs.

Photo by: Bill Fisher



JULY						
S	M	T	W	T	F	S
	1	2	3	4	5	6
7	8	9	10	11	12	13
14	15	16	17	18	19	20
21	22	23	24	25	26	27
28	29	30	31			

# AUGUST

## 2019

SEPTEMBER						
S	M	T	W	T	F	S
1	2	3	4	5	6	7
8	9	10	11	12	13	14
15	16	17	18	19	20	21
22	23	24	25	26	27	28
29	30					

Sunday	Monday	Tuesday	Wednesday	Thursday	Friday	Saturday
				1	2	3
4	5	6	7	8	9	10
11	12	13	14	15	16	17
18	19	20	21	22	23	24
25	26	27	28	29	30	31



Lighting over Crawford County - In September of 2017, Crawford County experienced an EF2 tornado. Ironically, a second tornado touched down two months later. Fortunately, there were no fatalities from these events. These were the 12th and 13th tornadoes to touch down in Crawford County since 1961, according to Crawford County native, chief meteorologist Marshall McPeck of ABC6/FOX28.

Photo by: Kirsten McCarthy

AUGUST						
S	M	T	W	T	F	S
				1	2	3
4	5	6	7	8	9	10
11	12	13	14	15	16	17
18	19	20	21	22	23	24
25	26	27	28	29	30	31

# SEPTEMBER

## 2019

OCTOBER						
S	M	T	W	T	F	S
		1	2	3	4	5
6	7	8	9	10	11	12
13	14	15	16	17	18	19
20	21	22	23	24	25	26
27	28	29	30	31		

Sunday	Monday	Tuesday	Wednesday	Thursday	Friday	Saturday
1	2       Labor Day	3	4	5	6	7
8	9	10	11       Patriot Day	12	13	14
15	16	17	18	19	20	21
22	23       Autumn begins	24	25	26	27	28
29	30					





The Sandusky River - A natural resource we need to care for. Pollutants flowing in the Sandusky can end up in the Atlantic Ocean via the water's pathway from the river to Lake Erie to Niagara Falls to Lake Ontario to the St. Lawrence Seaway to the Atlantic.

Photo by: Bill Fisher



SEPTEMBER

S	M	T	W	T	F	S
1	2	3	4	5	6	7
8	9	10	11	12	13	14
15	16	17	18	19	20	21
22	23	24	25	26	27	28
29	30					

# OCTOBER

## 2019

NOVEMBER

S	M	T	W	T	F	S
					1	2
3	4	5	6	7	8	9
10	11	12	13	14	15	16
17	18	19	20	21	22	23
24	25	26	27	28	29	30

Sunday	Monday	Tuesday	Wednesday	Thursday	Friday	Saturday
		1	2	3	4	5
6	7	8	9	10	11	12
13	14	15	16	17	18	19
	Columbus Day					
20	21	22	23	24	25	26
27	28	29	30	31		
				Halloween		



Crawford County is heavily rural farmlands, with urban areas comprising less than two percent of the county's land mass. An average of 117 people live in each of Crawford County's 402 square miles.

Photo by: Bill Fisher



OCTOBER

S	M	T	W	T	F	S
		1	2	3	4	5
6	7	8	9	10	11	12
13	14	15	16	17	18	19
20	21	22	23	24	25	26
27	28	29	30	31		

# NOVEMBER

## 2019

DECEMBER

S	M	T	W	T	F	S
1	2	3	4	5	6	7
8	9	10	11	12	13	14
15	16	17	18	19	20	21
22	23	24	25	26	27	28
29	30	31				

Sunday

Monday

Tuesday

Wednesday

Thursday

Friday

Saturday

3

4

5

6

7

8

9

Daylight Saving Time  
ends

Election Day

10

11

12

13

14

15

16

Veterans Day

National Philanthropy Day

17

18

19

20

21

22

23

24

25

26

27

28

29

30

Thanksgiving Day



Photo from: Galion Historical Society Facebook page



Probably the most widely known Galion citizen of all time, Bishop William M. Brown showed remarkable ability to organize and found churches and schools. During retirement he began publishing books in favor of communism. As a result, Bishop Brown was tried by the House of Bishops on a charge of heresy, and in 1925 he was deposed and lost his seat in the House of Bishops. Galionites remember him as a generous man who gave to charities, and his home, Brownella Cottage, is operated by the Galion Historical Society.

NOVEMBER

S	M	T	W	T	F	S
					1	2
3	4	5	6	7	8	9
10	11	12	13	14	15	16
17	18	19	20	21	22	23
24	25	26	27	28	29	30

# DECEMBER

## 2019

JANUARY 2020

S	M	T	W	T	F	S
			1	2	3	4
5	6	7	8	9	10	11
12	13	14	15	16	17	18
19	20	21	22	23	24	25
26	27	28	29	30	31	

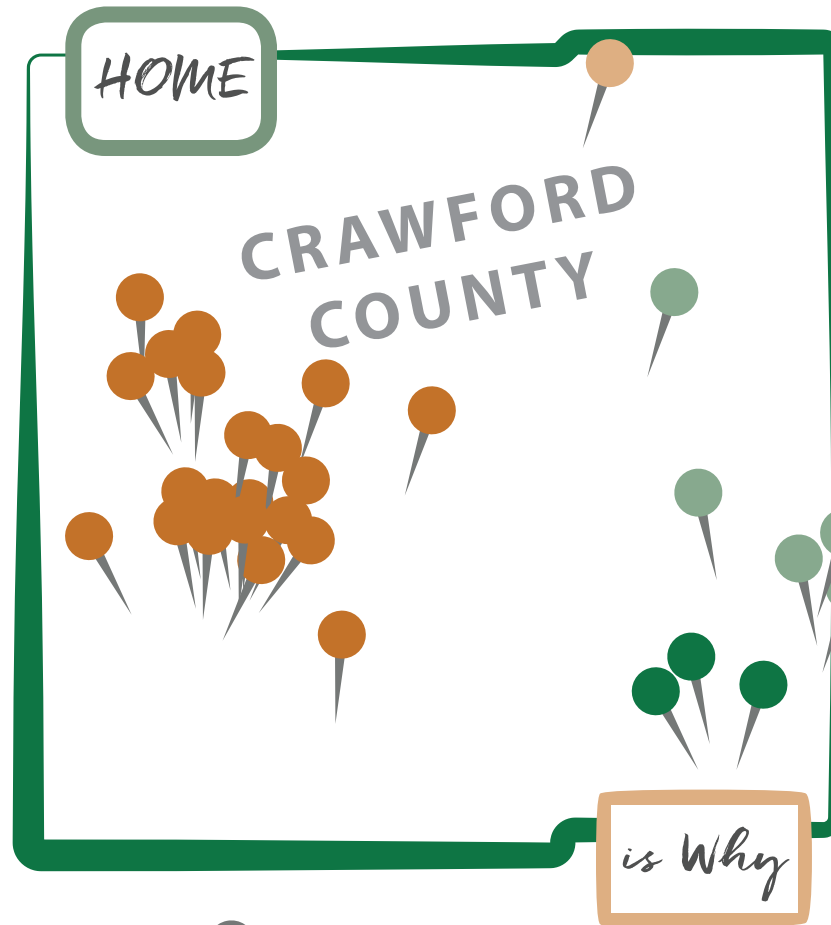
Sunday	Monday	Tuesday	Wednesday	Thursday	Friday	Saturday
1	2	3 #Giving2sday	4	5	6	7 Pearl Harbor Remembrance Day
8	9	10	11	12	13	14
15	16	17	18	19	20	21 Winter begins
22	23	24 Christmas Eve	25 Christmas Day	26	27	28
29	30	31 New Year's Eve				



# 2017 GRANT RECIPIENTS

**Bucyrus**

- 41 #Giving2sday Grants to Funds Held at the Foundation
- Alpha Recovery 12-Step Program
- BAY Soccer Club, Inc.
- Bucyrus Area YMCA Gymnastic Boosters
- Bucyrus Fire Department
- Bucyrus Historical Society
- Bucyrus Kiwanis Club
- Bucyrus Little League
- Bucyrus Outreach & Restoration Network (BORN)
- Bucyrus Public Library
- Crawford County Job and Family Services/ Crawford County Board of Commissioners
- Crawford County 4-H
- Crawford County Arts Council
- Crawford County Business/Education Advisory Council
- Crawford County Chapter of Ohio Genealogical Society, Inc.
- Crawford County Community Concert Association
- Crawford County Project Lifesaver
- Crawford Partnership
- Crawford Works
- Odyssey Recovery Group of Crawford County, Ohio, Inc.
- Seneca Crawford Area Transportation (SCAT)



**Crestline**

- Colonel Crawford Local Schools
- Crestline Assistance & Ministries Program (C.A.M.P.)
- Crestline Historical Society
- Friends of the Crawford Park District
- Wildlife Haven

**Galion**

- Galion Community Center YMCA
- Galion Depot, Inc.
- HomeCare Matters Home Health & Hospice

**New Washington**

- Village of New Washington

## Grant Recipient Organizations Serving Crawford County from Other Locations

- American Red Cross of North Central Ohio
- Girl Scouts of Ohio's Heartland Council, Inc.
- Junior Achievement of North Central Ohio
- Marion-Crawford Prevention Programs
- North Central State College Foundation

- Ronald McDonald House Charities of Central Ohio
- Team Focus Ohio Chapter
- Turning Point

# 2017 FUNDS AT THE COMMUNITY FOUNDATION FOR CRAWFORD COUNTY

The following funds have been created by individuals, corporations and non-profit organizations and help carry forth the mission of  
The Community Foundation for Crawford County. (\*indicates new fund)

Buckeye Central School Endowment Fund  
Bucyrus Auditorium Endowment Fund  
Bucyrus City School Endowment Fund  
Bucyrus Historical Society Designated Fund  
\*Bucyrus Outreach & Restoration Network (BORN) Fund  
Bucyrus Preservation Society Designated Fund  
Charles L. and Helen M. Wiles Designated Fund  
Colonel Crawford School Endowment Fund  
The Community Foundation for Crawford County Unrestricted Fund  
Council On Aging Designated Fund  
Crawford Antique Farm Machinery Association Designated Fund  
Crawford County Agricultural Society Fund  
Crawford County Community Concert Association Endowment Fund  
Crawford County Sports Hall of Fame Building Fund  
Crestline Historical Society Fund  
Crestline Music Boosters Designated Fund  
Crestline School Endowment Fund  
Early Childhood Education Quality Improvement Non-Endowed Fund  
Elizabeth C. Heckert Charitable Endowment Fund  
Friends of the Crawford Park District Fund  
Friendship Bridge Designated Fund  
\*Galion Community Center YMCA Fund  
Galion Community Education Foundation Brick and Mortar Fund  
Galion Community Education Foundation Fund

\*Galion Historical Society Endowment Fund  
Gertrude M. Bechtel Crossroads Mural Endowment Fund  
Harold G. & Louise C. Pry Memorial Fund  
Harvey School Designated Fund  
Holy Trinity Athletic Fund  
Humane Society Serving Crawford County Endowment Fund  
John T. & Grace B. Bridges Fund  
Little League Designated Fund  
Loren's Cancer Care Designated Fund  
Marian E. and Norman H. Maynard Bucyrus Public Library Fund  
Murals Endowment Fund  
New Washington Fund  
OMIG Crawford Unlimited Leadership (CULEAD) Designated Fund  
Playscape Designated Fund  
Robert Clark Neff Fountain Endowment Fund  
\*Schines Art Park Endowment Fund  
United Way Designated Fund  
Unrestricted Bucyrus Auditorium Fund  
Unrestricted Crawford County Community Concert  
Association/Robert Clark Neff Fund  
The Weekes Family Memorial Fund  
Wynford School Endowment Fund  
YMCA Bucyrus Designated Fund

“Change happens when people raise  
their voices for what’s right.”

-MELINDA GATES

HOME

is Why





## 2017 SCHOLARSHIP FUNDS

The following funds have been created by individuals, corporations and non-profit organizations and help carry forth the mission of The Community Foundation for Crawford County. (\*indicates new fund)

Crawford County Sports Hall of Fame Scholarship Fund  
Crawford Forward Scholarship Fund  
Daryl E. Stucky Memorial Scholarship Fund  
Dustin T. Stover Scholarship Fund  
\*First Federal Community Bank Come Home Scholarship Fund  
Holmes Liberty Alumni Scholarship Fund  
James E. Huggins, Sr. and Margaret M. Huggins Agricultural Scholarship Fund  
Jeanne A. Miller Scholarship Fund  
John W. Brubaker Jr. Scholarship Fund  
Kenneth Cummins Scholarship Fund  
Kevin A. Binau Scholarship Fund  
Kiwanis Kahle-Wenner Scholarship Fund  
The Larry Schiefer Memorial Scholarship Fund  
\*The Margaret and Donald Wenner, MD Scholarship Fund

Marvis Schaaf Scholarship Fund  
Merle and Peg Hutson Scholarship Fund  
Mount Zion Milton Harman Scholarship Fund  
Nancy Angene Johnson Scholarship Fund  
Noah Skylar Lear Memorial Scholarship Fund  
Pry Scholarship Fund  
Robert Schwaderer Scholarship Fund  
Rollie and Esther Wilson Scholarship Fund  
\*Richard A. Miller Scholarship Fund  
Richard E. Stearns Scholarship Fund  
Samuel Neff Fellowship for International Study Scholarship Fund  
Susan Campbell Memorial Scholarship Fund  
Tyler Niese Memorial Scholarship Fund



“Receiving this scholarship will be an invaluable aid in sponsoring me with the greatest adventure of my life thus far.”

**Emily Dotson**

2014 and 2018 Samuel Neff Fellowship for International Study Scholarship recipient



“People place a higher value on objects and experiences they are able to shape.”

**Jeremy Heimans and**

**Henry Timms**  
from *New Power*

# 2017 SCHOLARSHIP RECIPIENTS

The Community Foundation for Crawford County is proud to introduce the 2017 scholarship recipients for the following scholarships:

## CRAWFORD COUNTY SPORTS HALL OF FAME SCHOLARSHIP

Erin Baldosser, Buckeye Central HS  
Alexus Burkhart, Colonel Crawford HS  
Lucas Conner, Galion HS  
Tyler Glowaski, Wynford HS  
Loarel Mollenkopf, Bucyrus HS  
Tyler Sipes, Crestline HS

## CRAWFORD FORWARD SCHOLARSHIP

Crystal Dean, G.E.D.

## DARYL E. STUCKY MEMORIAL SCHOLARSHIP

Seth Hoffman, Wynford HS

## DUSTIN T. STOVER SCHOLARSHIP

Grant Carman, Colonel Crawford HS  
Hannah Crabtree, Wynford HS  
Kerri Reynolds, Colonel Crawford HS

## HOLMES LIBERTY ALUMNI SCHOLARSHIP

Hannah Underwood, Wynford HS

## JAMES E. HUGGINS, SR. AND MARGARET M. HUGGINS AGRICULTURAL SCHOLARSHIP

Jessica McCombs, Wayside Christian HS  
Luke Scott, Wynford HS

## JEANNE A. MILLER SCHOLARSHIP

Alexus Ross, Wynford HS

## JOHN W. BRUBAKER, JR. SCHOLARSHIP

Loarel Mollenkopf, Bucyrus HS

## KENNETH CUMMINS SCHOLARSHIP

Brianna Durnwald, Buckeye Central HS Graduate  
Jocelyn Hepp, Buckeye Central HS  
Sara Stacklin, Buckeye Central HS

## KEVIN A. BINAU SCHOLARSHIP

Tara Zinser, Wynford HS

## KIWANIS KAHLE-WENNER SCHOLARSHIP

Emily Kemper, Colonel Crawford HS  
Tanner Knepp, Wayside Christian HS

## LARRY SCHIEFER MEMORIAL SCHOLARSHIP

Haley Kessinger, Wynford HS

## MARVIS SCHAAF SCHOLARSHIP

Madysen Lawson, Galion HS  
Tyler Sipes, Crestline HS

## MERLE AND PEG HUTSON SCHOLARSHIP

Nicholas Buckner, Crestline HS  
Allyson Clark, Crestline HS  
Katelyn Davey, Crestline HS  
Jacob Martin, Crestline HS  
Tyler Sipes, Crestline HS  
Courtney Swanger, Crestline HS  
Sarah Toy, Crestline HS  
Samantha Wilhite, Crestline HS

## MOUNT ZION MILTON HARMAN SCHOLARSHIP

Jack Reed, Wynford HS

## NANCY ANGENE JOHNSON SCHOLARSHIP

Tara Zinser, Wynford HS

## NOAH SKYLAR LEAR MEMORIAL SCHOLARSHIP

Kayleigh Seiber, Bucyrus HS  
Braxen Spears, Bucyrus HS

## PRY SCHOLARSHIP

Crystal Dean, G.E.D.  
Kelsie Fleming, Bucyrus HS  
Traci Lohr, Townsend Community School

## RICHARD E. STEARNS SCHOLARSHIP

Haley Van Voorhis, Bucyrus HS Graduate

## ROBERT SCHWADERER SCHOLARSHIP

Eric Hanes, Buckeye Central HS Graduate  
Ashley Stockmaster, Buckeye Central HS Graduate

## ROLLIE AND ESTHER WILSON SCHOLARSHIP

Abigail Teglovic, Colonel Crawford HS

## SAMUEL NEFF FELLOWSHIP FOR INTERNATIONAL STUDY SCHOLARSHIP

Taylor Baumberger, Wynford HS Graduate, Kent State  
University Student, Travel to Italy

## SUSAN CAMPBELL MEMORIAL SCHOLARSHIP

Bradley Bauer, Colonel Crawford HS  
Emily Kemper, Colonel Crawford HS

## TYLER NIESE MEMORIAL SCHOLARSHIP

Erin Baldosser, Buckeye Central HS  
Jocelyn Hepp, Buckeye Central HS  
Emma Studer, Buckeye Central HS

“When you’re finished  
changing, you’re finished.”  
-BENJAMIN FRANKLIN



# 2017 COMMUNITY INVESTORS

Thanks to our donors, The CF4CC is making charitable dreams come true every day in Crawford County and beyond. These individuals, organizations, and businesses provided the monies for the funds for the Foundation's integrated work.

## A

A-1 Printing  
ADM Benefit Plans Agency, Inc.  
Advanced Fiber Technology, Inc.  
Alerding Family  
Alpine Electric, Inc.  
Rocky & Brenda Alt  
Jane Angene  
Lyle Angene  
Anthony Lee Screen Printing, Inc.  
Phillip & Elizabeth Atzinger  
David & Patty Auck  
Nathan & Lynn Auck

## B

C. David & Marcia Baker  
June Baker  
Sue Banks  
J. Alan & Mary Ann Basinger  
Mike & Connie Beck  
J. Sebastian & Jessica Berger  
Bess Blvd Real Estate Company Ltd  
Bucyrus High School Class of 1967  
Dick & Pam Binau  
Donald Binau  
Suzanne Binau  
Kenneth & Jeanne Bishop  
Kim Blum-Hyclak  
Bucyrus Outreach and Restoration Network  
Lois Brewer  
Troy Bright  
Linda Brigner  
Lyle Brostrom and Jeannene Ackerman  
Tom Brown  
Bucyrus Area YMCA  
Bucyrus Girls' Boosters  
Bucyrus High School Student Council  
Bucyrus Road Materials, Inc.  
Bucyrus Tire LLC  
BUNCO 2nd Thursday  
BUNCO 4th Thursday  
Burkhart Farm Center  
Donald & Marilyn Burkholder  
Janice Butler

## C

Ken & Deb Cameron  
Jeffrey & Ruth Ann Campbell  
Lloyd Campbell  
Carol Carpenter  
Richard & Loyce Carpenter  
Carter Electric, Inc.  
Steve Chandler  
Chevron Matching Employee Funds of YourCause, LLC  
Crestline High School Class of 1967  
Civasta Bank  
Randy Clady  
Charles & Lisa Clark  
David Cochran  
Gary & Helen Cole  
Colonel Crawford Lions Club  
Colonel Crawford Schools Foundation  
Cooper's Mill, Inc.  
Ron Cover  
David & Alaina Crall  
Norman & Autumn Cramer  
Cranberry Hills Golf Course, LLC  
Crawford County Agricultural Society  
Crawford County Community Concert Association  
The Crawford Partnership  
Crawford County Ohio Chapter Retired Teachers  
Crawford County Sports Hall of Fame  
Crestline Chiropractic Clinic  
Crestline Railroad Community Corp.

## D

Demolition Fund of Projects, Inc.  
Dr. Dorey Diab  
Gerry & Liz Dolan  
Donald E. Wilson Family Trust  
David & Deborah Dostal  
Dzugan Real Estate Services, LLC  
Joe & Lynlee Dzugan

## E

Earth, Wind & Flowers Garden Club  
Kris & Tara Eckert  
Emerson Eckstein  
Steven Eckstein  
Myra Enright  
Harold & Martha Eppley  
Kathleen Eristen

## F

William & Christina Ferrell  
Todd & Jacquelyn Fike  
First Federal Community Bank  
Bill & Donna Fisher  
Matthew Flannery  
Flex Fitness Club, LLC  
Jeff & Karen Flowers  
Gary & Holly Frankhouse  
Sandra Freshner  
Albert & Jaynce Fulton

## G

Galion Community Center YMCA  
Galion Community Education Foundation  
Galion Historical Society  
Galion Middle School  
Galion Primary School  
Grant & Margaret Garverick  
Lowell & Dolores Garverick  
Tubby & Nola Garverick  
June Gebhardt  
Phillip & Sandy Gerber  
Terry & Kathleen Gernert  
Brent & Kathy Gledhill  
Michael & Michaelene Gottfried  
David Graham  
Dana & Carol Griffith  
Robert & Judy Grochowalski  
David & Missi Grove  
Jim Grubbs  
Pam Grubel  
Ruthann Grubel

## H

Veronica Halberg  
David & Karen Halsey  
William & Pamela Harper  
Marjorie Harter  
Scott & Mary Lou Hastings  
David Hendrix  
Dr. Francis & Shannon Henize, Jr.  
Hank & Joy Hessey  
Tim & Cheryl Hicks  
Hiler Partnership  
Hinesman Group  
Hocker Family Trust

Julia Hoffman  
Mike & Beth Hoffman  
Holmes Liberty Class of 1960  
Carole Holt  
Sherry Holt  
Dr. Jeffrey & Carol Holter  
Tom & Pam Holtshouse  
Linda Hoover  
Pat & Janel Hord  
Robert & Inez Hord  
Horizon Mechanical & Electrical, Inc.  
Douglas & Susan Horsley  
Dale & Margaret Hoyles  
Marian Huggins  
Schon & Patricia Hughes

## I

Insurance Center of Bucyrus

## J

J & F Construction & Development, Inc.  
J & F Real Estate Investments, LLC  
Phillip Jackson  
Paulette James  
David & Joan Jones  
Elise Jones

## K

Bill & Nan Kahle  
Beth Kahle-Miskell  
Jennifer Kahle-Vance  
Rev. Ronald & Susan Keller  
Jon Kelso  
John & Joyce Kennedy  
Susan Kent  
Kernan Insurance Agency, Inc.  
Judith Kesler  
Kevin & Tonya Kimmel  
Thomas King  
Kinn Brothers, Inc.  
Janet Kohls  
Susan Kowalske  
Martha Kozik  
Kathryn Kurtz

## L

Lon & Katie Leapley  
Chris Leuthold  
Dorothy M. Leuthold Estate  
Glenda Leuthold  
Neill Ley  
Leyda 2014 Revocable Family Trust  
Dorothy Linn  
Robert & Tasha Lisle  
Alberta Lohr  
Andy & Tonya Lohr  
Kathleen Lowe  
Edward & Cheryl Luidhardt  
James & Helen Luidhardt  
Lutz Brothers

## M

Janet Maddy  
Makeever & Associate, Inc.  
Sandy Markley Klieger  
Mathews Chevrolet-Buick Bucyrus  
Dr. Pete & Susan Maynard  
Simon & Denise Maynard  
Scott & Kelly McCarthy  
Jim & Barb McEldowny  
Brad & Krista McKibben  
Jason & Erin McMullen  
Dr. Glen & Nancy McMurray  
Libby McPeek  
Merle and Peg Hutson Scholarship Committee  
Mike Romanoff Enterprises  
Bill & Mary Lee Minor  
Ann Mullins

## N

Joseph & Elaine Naples  
Network for Good  
Niese Farms  
Rick & Shelly Niese

## O

Oberlander's Tree & Landscape, Ltd.  
Ohio Electrical Control, Inc.  
Ohio Mutual Insurance Group  
Old Crawford Land Title Agency, LTD.  
Shirley Oliphant  
Ric Olt  
OneIT  
Matt & Minda Orians  
Mark & Judy Osborne

## P

Charlene Parkinson  
Peoples Savings & Loan Company  
Spencer & Amanda Perdue  
Petersilge Donor-Advised Fund of Schwab Charitable  
James & Anita Phillips  
James & Deborah Pigman  
Joseph & Mary Platt  
Brian & Andrea Presler  
Dan & Barb Price  
Jim & Janet Pry

## R

Ralph E. Boyd Foundation  
Col. Jim & Sylvia Rankin  
Rego Manufacturing Co., Inc  
Jeff & Gayle Reser  
Dr. Laurie Anne Rhodebeck Estate  
Richard A. Miller Scholarship Committee  
Richland Real Estate  
Sean & Kendra Ritzhaupt  
Roberts Family  
Tami Robinson  
Mike & Paula Romanoff  
Rotary Club of Bucyrus  
David & Carol Rowland  
Ruth and Sam Neff Fund of the  
Fidelity Charitable Gift Fund  
Ryder-Heil Bronze, Inc.

## S

David Salvati  
Ron & Carolyn Sand  
Jeffrey & Valerie Sanderson  
Russ & Judi Saurers  
Marvis A. Schaaf Estate  
Janet Schiefer  
Jerry & Joyce Schiefer  
Cheryl Schmidt  
Ron & Ronda Scott  
Dr. Joe & Sue Shadeed  
David Sharrock  
Debra Shields  
Dennis & Kathy Siefert  
Sloan Concrete LLC  
Douglas Smith  
Gene Smith  
Karen Smith  
Liz Smith  
Matt Smith  
Robert & Rachel Smith  
Frederic Sparks  
Joyce Spiegel  
Spreng Capital Management, Inc.  
Jim & Valerie Spreng  
Julie Stark Polak  
Starkey & Stoll Ltd.  
Brad & Karen Starkey  
Tim & Kathy Stenson  
J. William & Marilyn Stepro  
Jon Stinehour  
Michael & Linda Stitzlein  
Eric & Samantha Stover  
Richard & Kathryn Stowe  
Stuckman Family Fund of Fidelity Charitable  
Mike & Susan Stuckman  
Stucky Farms  
Studer Electric Inc.  
Lynne Sutton

## T

Team Hugs From Heaven  
Harold & Rose Teets  
Dawn Tilson  
The Timken Company Charitable  
and Educational Fund, Inc.  
Emmett & Jeannine Tupps

## U

United Bank

## V

Barbara Vanorsdall  
Bob Vasil  
Amy Vaughn  
Dennis & Joyce Vaughn

## W

Kit Walter  
David & Melisa Watters  
Duane & Connie Watts  
Timothy Weiskopf  
Dr. Donald Wenner  
Haven & Marianne Wensinger  
CoAnn Westerhold  
Rick Winbigler  
David & Angela Wise  
Dale & Joan Wolfe  
Women of the Moose Bucyrus Chapter No. 741  
Bruce & Lisa Workman  
Gerald & Mary Wurm  
Rick & Kathy Wurm  
Wurm's Woodworking Co.  
Wynford FFA Alumni

## Y

Marcia Yunker

# COMMUNITY LEGACY

Thank you to the following contributors that have arranged a planned gift to the Foundation. A planned gift is a contribution that a person decides to give at some future date, either a number of years from now or at death. There are many kinds of planned gifts, including but not limited to: bequests in a will, a trust, or an estate plan; charitable gift annuities; retirement funds; charitable remainder trusts; life estate contracts; charitable lead trusts; pooled income funds; life insurance; and non-cash assets and assets transferred using pay-on-death or transfer-on-death documents.

Paul Bechtel  
Glen & Alice Beers  
Esther Ferguson  
Richard Frederick

Ralph & Pam Grubel  
R. Scott Hastings  
Tim Heydinger  
Tom & Pam Holtshouse

Dorothy Leuthold  
Dahna Loeding  
Helen Picking Neff  
Jim & Janet Pry

Dr. Laurie Anne Rhodebeck  
Marvis Schaaf  
Gladys Schrag

## The Community Foundation For Crawford County

254 East Mansfield Street, Bucyrus, Ohio 44820  
tel: 419-562-3958  
fax: 419-617-7308  
email: [info@cfccrawford.org](mailto:info@cfccrawford.org)  
[www.cfccrawford.org](http://www.cfccrawford.org)



The  
Community  
Foundation  
For Crawford  
County



Excellence. Accountability. Impact.™



# 2019 CALENDAR

**JANUARY**

S	M	T	W	T	F	S
		1	2	3	4	5
6	7	8	9	10	11	12
13	14	15	16	17	18	19
20	21	22	23	24	25	26
27	28	29	30	31		

**FEBRUARY**

S	M	T	W	T	F	S
					1	2
3	4	5	6	7	8	9
10	11	12	13	14	15	16
17	18	19	20	21	22	23
24	25	26	27	28		

**MARCH**

S	M	T	W	T	F	S
					1	2
3	4	5	6	7	8	9
10	11	12	13	14	15	16
17	18	19	20	21	22	23
24	25	26	27	28	29	30
31						

**APRIL**

S	M	T	W	T	F	S
	1	2	3	4	5	6
7	8	9	10	11	12	13
14	15	16	17	18	19	20
21	22	23	24	25	26	27
28	29	30				

**MAY**

S	M	T	W	T	F	S
			1	2	3	4
5	6	7	8	9	10	11
12	13	14	15	16	17	18
19	20	21	22	23	24	25
26	27	28	29	30	31	

**JUNE**

S	M	T	W	T	F	S
						1
2	3	4	5	6	7	8
9	10	11	12	13	14	15
16	17	18	19	20	21	22
23	24	25	26	27	28	29
30						

**JULY**

S	M	T	W	T	F	S
	1	2	3	4	5	6
7	8	9	10	11	12	13
14	15	16	17	18	19	20
21	22	23	24	25	26	27
28	29	30	31			

**AUGUST**

S	M	T	W	T	F	S
					1	2
3	4	5	6	7	8	9
10	11	12	13	14	15	16
17	18	19	20	21	22	23
24	25	26	27	28	29	30
31						

**SEPTEMBER**

S	M	T	W	T	F	S
1	2	3	4	5	6	7
8	9	10	11	12	13	14
15	16	17	18	19	20	21
22	23	24	25	26	27	28
29	30					

**OCTOBER**

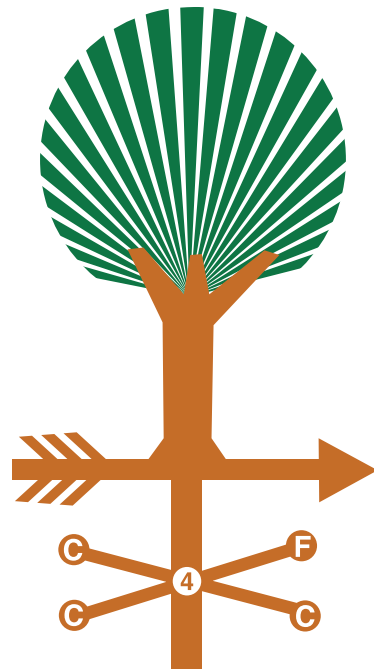
S	M	T	W	T	F	S
		1	2	3	4	5
6	7	8	9	10	11	12
13	14	15	16	17	18	19
20	21	22	23	24	25	26
27	28	29	30	31		

**NOVEMBER**

S	M	T	W	T	F	S
					1	2
3	4	5	6	7	8	9
10	11	12	13	14	15	16
17	18	19	20	21	22	23
24	25	26	27	28	29	30

**DECEMBER**

S	M	T	W	T	F	S
1	2	3	4	5	6	7
8	9	10	11	12	13	14
15	16	17	18	19	20	21
22	23	24	25	26	27	28
29	30	31				



The  
Community  
Foundation  
For Crawford  
County  
Direction for the Future

Thank you to these Crawford Countians who contributed photos:

Bill Fisher  
Adam Knapp  
Kirsten McCarthy  
Lisa Workman  
Dick Cope  
Mick McCarthy  
Don Tudor